

Client



Source

**Frankincense** (*Boswellia carterii*)

EVS-2026-NG-12

Sample

**Frankincense** (*Boswellia carterii*)

**Batch #:** SO-59537  
**Type:** Essential Oil  
**Origin:** Somalia  
**CAS #:** 8016-36-2

Client

**NATURE'S GIFT**

Properties

**RI:** NT  
**SG:** NT

Primary

**31.10%** | **alpha-Pinene**  
**15.31%** | **Limonene**  
**6.28%** | **Sabinene**  
**6.17%** | **Myrcene**

Result

**Pass**

Meets specifications

ANALYSIS SUMMARY

Total Compounds: **107**

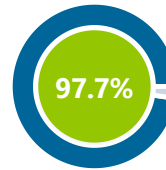
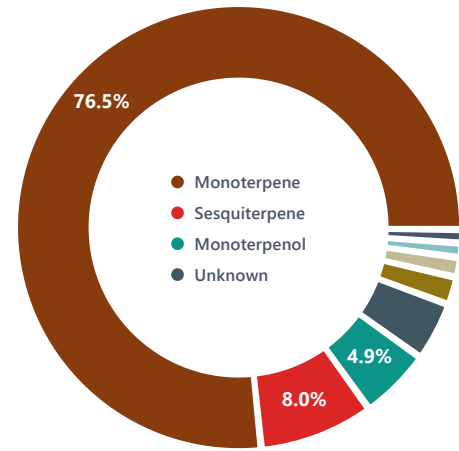
Lab

**Essential Validation Services**

EO Testing Lab

240 Goose Hollow Road  
 Berthoud, Colorado 80513

Phone: (317) 361-5044

[essentialvalidationservices.com](http://essentialvalidationservices.com)**CHEMICAL FAMILY BREAKDOWN****TOTAL CONTENT IDENTIFIED****97.7%** identified

2.3% unidentified

Conclusion

**PROFESSIONAL ANALYSIS SUMMARY**

Analysis of this Frankincense (*Boswellia carterii*) Essential Oil sample was conducted against the Frankincense (*Boswellia Carterii*) standard specification. The chromatographic analysis accounted for 97.7% of the total sample composition. All major constituents were found to be within the expected ranges specified in the standard. No adulterants, diluents, or contaminants were detected via this method. This oil meets the expected profile for genuine Frankincense (*Boswellia Carterii*).

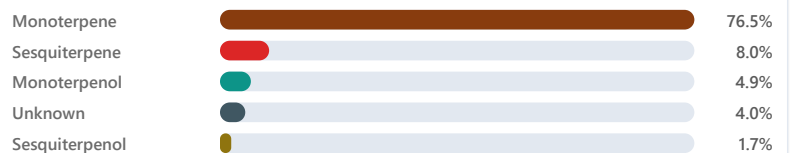
Adam Christensen • Mar 21, 2026

Adam Christensen

Analyst Signature

Date

Mar 21, 2026

**CHEMICAL FAMILY DISTRIBUTION**

Client



Source

**Frankincense** (*Boswellia carterii*)

EVS-2026-NG-12

## Expected vs. Detected Components

Comparison against EVS Internal Standard for Frankincense (Boswellia Carterii) - Essential Validation Services

Compound	Expected	Detected	Status	Family
1 alpha-Pinene	30.00-56.00%	31.10%		Monoterpene
2 Limonene	3.00-23.00%	15.31%		Monoterpene
3 Myrcene	1.00-19.00%	6.17%		Monoterpene
4 alpha-Thujene	0.50-14.00%	3.69%		Monoterpene
5 beta-Pinene	0.70-7.00%	2.59%		Monoterpene
6 Sabinene	2.50-6.50%	6.28%		Monoterpene
7 para-Cymene	1.00-6.00%	3.77%		Monoterpene
8 beta-Caryophyllene	0.50-4.50%	2.25%		Sesquiterpene
9 delta-3-Carene	0.07-3.50%	1.47%		Monoterpene
10 alpha-Phellandrene	0.10-3.50%	2.88%		Monoterpene
11 Camphene	0.30-1.75%	1.11%		Monoterpene
12 Terpinen-4-ol	0.20-1.50%	0.72%		Monoterpenol
13 trans-Pinocarveol	0.05-1.50%	0.80%		Monoterpenol
14 Caryophyllene oxide	0.05-1.50%	0.70%		Sesquiterpene Ether

## Professional Analysis Summary

### 1 Sample Analysis

This Frankincense (*Boswellia carterii*) sample shows **107** detected compounds (**106** identified, 99.1% rate).

### 2 Major Components

Predominant: **alpha-Pinene** (31.1%), **Limonene** (15.3%), **Sabinene** (6.3%), +10 others.

### 3 Chemical Profile

**13** chemical families: Monoterpene, Sesquiterpene, Alkane, +10 others.

### 4 Quality Assessment

Sample **meets** specifications for Frankincense (*Boswellia carterii*).

Client



Source

**Frankincense** (*Boswellia carterii*)

EVS-2026-NG-12

Total Percentage:

**97.67%**

Number	RT	Area %	Compound Name	Chemical Family
1	10.24	0.45%	Hashishene	Monoterpene
2	10.37	3.69%	alpha-Thujene ✓ (0.50%-14.00%)	Monoterpene
3	10.69	31.10%	alpha-Pinene ✓ (30.00%-56.00%)	Monoterpene
4	11.09	0.02%	alpha-Fenchene	Monoterpene
5	11.16	1.11%	Camphene ✓ (0.30%-1.75%)	Monoterpene
6	11.28	0.35%	Thuja-2,4(10)-diene	Monoterpene
7	11.82	6.28%	Sabinene ✓ (2.50%-6.50%)	Monoterpene
8	12.03	2.59%	beta-Pinene ✓ (0.70%-7.00%)	Monoterpene
9	12.17	6.17%	Myrcene ✓ (1.00%-19.00%)	Monoterpene
10	12.36	0.02%	Dehydro-1,8-cineole	Monoterpene Ether
11	12.83	2.88%	alpha-Phellandrene ✓ (0.10%-3.50%)	Monoterpene
12	12.93	0.11%	7.96 Cresol methyl ether<ortho->	Unknown
13	13.06	1.47%	delta-3-Carene ✓ (0.07%-3.50%)	Monoterpene
14	13.24	0.24%	alpha-Terpinene	Monoterpene
15	13.34	0.28%	2-Octanol	Aliphatic Alcohol
16	13.51	3.77%	para-Cymene ✓ (1.00%-6.00%)	Monoterpene
17	13.71	15.31%	Limonene ✓ (3.00%-23.00%)	Monoterpene
18	13.84	0.25%	1,8-Cineole	Monoterpene Ether
19	14.16	0.25%	(Z)-beta-Ocimene	Monoterpene
20	14.74	0.38%	gamma-Terpinene	Monoterpene
21	14.87	0.06%	1-Octanol	Aliphatic Alcohol
22	15.10	0.04%	trans-Sabinene hydrate	Monoterpenol
23	15.27	0.02%	10.35 Dihydromyrcenol	Unknown
24	15.83	0.11%	alpha-Pinene oxide	Monoterpene Ether
25	15.92	0.26%	Terpinolene	Monoterpene
26	16.13	0.20%	Linalool	Monoterpenol
27	16.27	0.19%	Perillene	Monoterpene Ether
28	16.77	0.06%	trans-para-Mentha-2,8-dien-1-ol	Monoterpenol
29	16.89	0.08%	Myrcenol	Monoterpenol
30	16.97	0.01%	Octan-3-yl acetate	Aliphatic Ester
31	17.11	0.09%	beta-Thujone	Monoterpene Ketone

Client



Source

**Frankincense** (*Boswellia carterii*)

EVS-2026-NG-12

Number	RT	Area %	Compound Name	Chemical Family
32	17.27	0.08%	cis-para-Menth-2-en-1-ol	Monoterpenol
33	17.35	0.18%	Alloocimene	Monoterpene
34	17.46	0.34%	alpha-Campholene aldehyde	Monoterpene Aldehyde
35	17.58	0.02%	12.45 Undecyne<1->	Unknown
36	17.76	0.06%	cis-para-Mentha-2,8-dien-1-ol	Monoterpenol
37	17.92	0.03%	cis-Limonene oxide	Monoterpene Ether
38	18.00	0.04%	cis-Sabinol	Monoterpenol
39	18.13	0.80%	trans-Pinocarveol	(0.05%-1.50%) Monoterpenol
40	18.25	1.04%	trans-Verbenol	Monoterpenol
41	19.01	0.05%	Pinocamphone	Monoterpene Ketone
42	19.10	0.58%	para-Mentha-1,5-dien-8-ol	Monoterpenol
43	19.23	0.04%	Borneol	Monoterpenol
44	19.38	0.03%	Umbellulone	Monoterpene Ketone
45	19.64	0.72%	Terpinen-4-ol	(0.20%-1.50%) Monoterpenol
46	19.81	0.15%	para-Cymen-8-ol	Monoterpenol
47	20.02	0.06%	Cryptone	Monoterpene Ketone
48	20.14	0.40%	alpha-Terpineol	Monoterpenol
49	20.43	0.24%	Myrtenol	Monoterpenol
50	20.52	0.20%	Myrtenal	Monoterpene Aldehyde
51	20.61	0.76%	Octanol acetate	Unknown
52	20.83	0.03%	trans-Piperitol	Monoterpenol
53	21.05	0.38%	Verbenone	Monoterpene Ketone
54	21.26	0.24%	cis-Carveol	Monoterpenol
55	21.35	1.15%	1-Methoxydecane	Alkane
56	21.77	0.08%	trans-Carveol	Monoterpenol
57	21.94	0.03%	Hexyl isovalerate	Monoterpene Ester
58	22.29	0.03%	Cuminal	Monoterpene Aldehyde
59	22.41	0.15%	Carvone	Monoterpene Ketone
60	24.22	0.46%	Bornyl acetate	Monoterpene Ester
61	24.59	0.04%	Carvacrol	Monoterpenol
62	26.51	0.02%	delta-Elemene	Sesquiterpene
63	26.82	0.07%	alpha-Terpinyl acetate	Monoterpene Ester
64	27.03	0.11%	alpha-Cubebene	Sesquiterpene

Client



Source

**Frankincense** (*Boswellia carterii*)

EVS-2026-NG-12

Number	RT	Area %	Compound Name	Chemical Family
65	27.97	0.08%	Neryl acetate	Monoterpene Ester
66	28.26	0.60%	alpha-Copaene	Sesquiterpene
67	28.70	0.21%	beta-Bourbonene	Sesquiterpene
68	28.83	0.94%	beta-Elemene	Sesquiterpene
69	29.75	0.10%	alpha-Gurjunene	Sesquiterpene
70	30.21	2.25%	beta-Caryophyllene	Sesquiterpene
				(0.50%-4.50%)
71	30.55	0.13%	cis-alpha-Bergamotene	Sesquiterpene
72	31.01	0.06%	6,9-Guaiadiene	Sesquiterpene
73	31.16	0.03%	Aromadendrene	Sesquiterpene
74	31.39	0.03%	trans-Muurolo-3,5-diene	Sesquiterpene
75	31.60	0.55%	alpha-Humulene	Sesquiterpene
76	31.79	0.02%	cis-Muurolo-3,5-diene	Sesquiterpene
77	31.91	0.16%	allo-Aromadendrene	Sesquiterpene
78	32.27	0.04%	trans-Cadina-1(6),4-diene	Sesquiterpene
79	32.36	0.25%	gamma-Muuroloene	Sesquiterpene
80	32.67	0.30%	Germacrene D	Sesquiterpene
81	32.93	0.46%	beta-Selinene	Sesquiterpene
82	33.14	0.29%	epi-Cubebol	Sesquiterpenol
83	33.26	0.49%	alpha-Selinene	Sesquiterpene
84	33.59	0.03%	delta-Guaiene	Sesquiterpene
85	33.92	0.35%	gamma-Cadinene	Sesquiterpene
86	34.18	0.77%	delta-Cadinene	Sesquiterpene
87	34.34	0.04%	Zonarene	Sesquiterpene
88	34.61	0.04%	trans-Cadina-1,4-diene	Sesquiterpene
89	34.81	0.03%	alpha-Cadinene	Sesquiterpene
90	35.06	0.01%	alpha-Calacorene	Sesquiterpene
91	35.18	0.06%	Elemol	Sesquiterpenol
92	35.43	0.02%	(E)-Nerolidol	Sesquiterpenol
93	35.68	0.01%	30.75 Decanediol<1,10->	Unknown
94	36.19	0.02%	Palustrol	Sesquiterpenol
95	36.38	0.01%	Germacrene D-4-ol	Sesquiterpenol
96	36.50	0.06%	Spathulenol	Sesquiterpenol
97	36.79	0.70%	Caryophyllene oxide	Sesquiterpene Ether
				(0.05%-1.50%)

Client



Source

**Frankincense** (*Boswellia carterii*)

EVS-2026-NG-12

Number	RT	Area %	Compound Name	Chemical Family
98	37.12	0.66%	Viridiflorol	Sesquiterpenol
99	37.79	0.31%	Globulol	Sesquiterpenol
100	37.88	0.07%	1,10-di-epi-Cubenol	Sesquiterpenol
101	38.78	0.51%	34.38 Cadinol<epi-alpha-> (=tau-cadinol)	Unknown
102	38.92	0.09%	1-epi-Cubenol	Sesquiterpenol
103	39.28	0.11%	beta-Eudesmol	Sesquiterpenol
104	39.92	0.05%	allo-Aromadendrene epoxide	Sesquiterpene Ester
105	49.30	0.10%	45.98 Geranyl linalool<Z,Z->	Unknown
106	50.08	0.14%	46.16 Cembrene A<3Z->	Unknown
107	50.42	0.04%	46.90 Geranyl linalool<E,Z->	Sesquiterpenol

